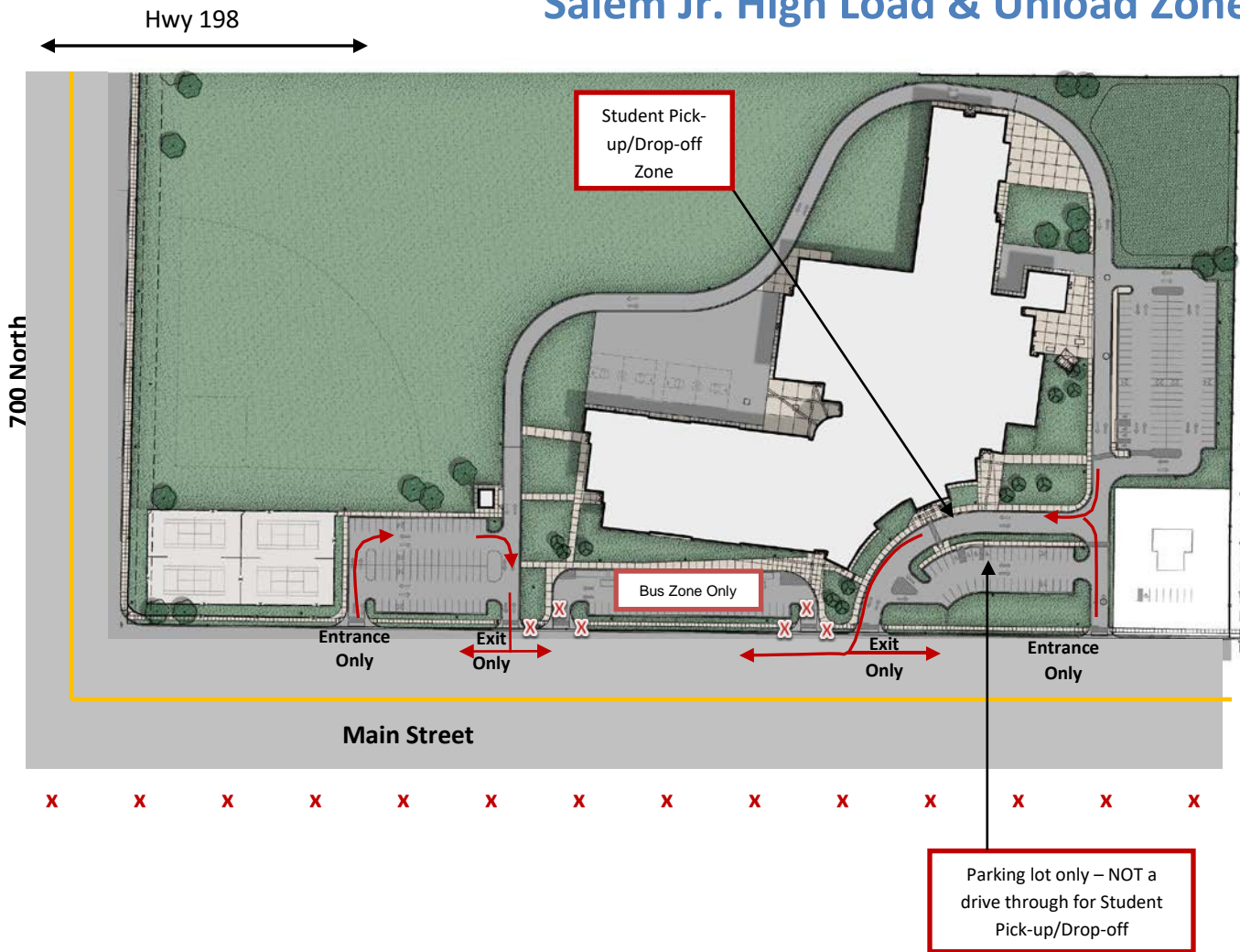


# Salem Jr. High Load & Unload Zone



## HELP KEEP OUR SCHOOL SAFE

### PLEASE

- Do **NOT** drive through the parking lot to drop off/pick up students. **This zone is for parking only.**
- In the student pick-up/drop-off zone:
  - Do not park. This zone is only for stopping to load and unload.
  - Follow the load and unload zone arrows. Traffic should flow north.
- Make a plan for pick-up/drop-off away from the high traffic areas, if possible.
- To keep the flow of traffic moving north, when dropping off or picking up students before and after school, follow Main Street north to 700 north, and then travel east to Hwy 198 (*Recommended by Salem PD*).
- Stay out of the bus zone area at all times and do not park within 10 feet (either side) of the entrance or exit to the bus zone.
- Do not park on the west side of Main Street. **X = No Parking Zone**
- Do not drive more than 10 mph on school property. In congested areas, drive no more than 5 mph.